



C09-A/AEI/BM/C/CM/CH/CHPP/CHPC/
CHOT/CHST/EC/EE/IT/MET/M/
MNG/PET/TT/RAC-107

3005

BOARD DIPLOMA EXAMINATION, (C-09)

OCT/NOV—2018

FIRST YEAR (COMMON) EXAMINATION

ENGINEERING DRAWING

Time : 3 hours]

[Total Marks : 60

PART—A

4×5=20

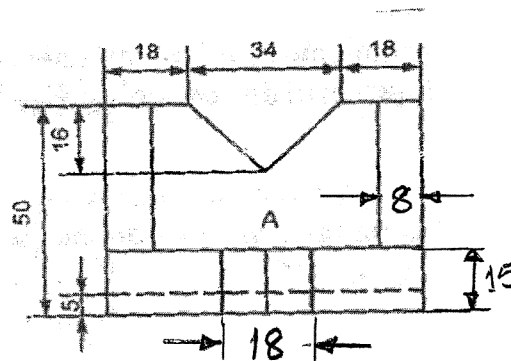
Instructions : (1) Answer **all** questions.

(2) Each question carries **five** marks.

(3) All dimensions are in mm.

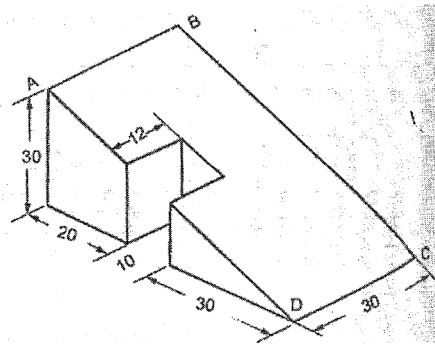
1. Print following in single stroke vertical capital lettering of 10mm size as per SP: 46-1988 “GOVERNMENT OF ANDHARA PRADESH”

2. Redraw the following figure in unidirectional system of dimensioning.



3. A ball thrown from the ground level reaches a maximum height of 8m and travels a horizontal distance of 16m from the point of projection . Trace the path of the ball (Parabola)

4. Draw the auxiliary view of the inclined surface of the object shown below.

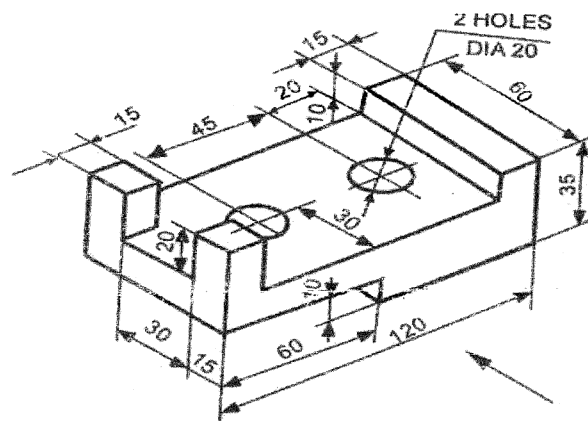


PART-B

4×10=40

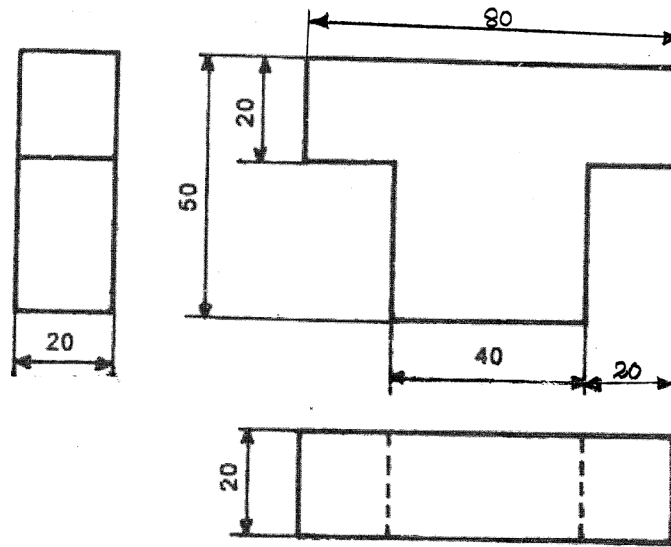
- Instructions :** (1) Answer *any four* questions.
 (2) Each questions carries **ten** marks.
 (3) All dimensions are in mm.

5. A circular coin of 50mm diameter rolls on a straight horizontal table without slipping. A point on the circumference of the coin is in contact with the table surface in the beginning and after one complete revolution . Draw the cycloidal path traced by the point.
6. A pentagonal prism, with side of base 30mm and axis 70mm long, lies with one of its rectangular faces on H.P and axis inclined at 45° to V.P. Draw the projections of the prism.
7. Draw the front view, top view and left side view of the following object.



8. A Hexagonal prism has a face on the HP and the axis parallel to VP. It is cut by vertical section plane, the plane of which makes an angle of 45° with VP and cut the axis at a point 20mm from one of its ends. Draw its sectional front view and true shape of section. The side of the base 25mm long, height 65mm.

9. Draw the isometric view of the object whose orthographic views are given below.



10. A pentagonal prism of side of base 20mm and height 50mm, stands vertically on its base with a rectangular face perpendicular to V.P. A cutting plane perpendicular to V.P and inclined at 60° to the axis, passes through the edge of the top base of the prism. develop the lower portion of the lateral surface of the prism.